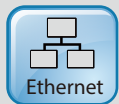


## A Duplex High-Volume Production Scanner



### Features:

- Fast, 120 ppm / 240 ipm scanning in color, grayscale and monochrome (300 dpi, color)
- Support document up to A3 size (308 x 432 mm)
- Robust 500-page automatic document feeder
- Daily duty cycle of up to 60,000 sheets
- Auto crop and deskew a document with the advanced image processing unit to enhance the scanning speed
- Latest USB3.2 Gen 1x1 connectivity for faster transmission speed
- Reverse roller technology delivers outstanding feeding reliability
- Hard and embossed card scanning up to 1.25 mm in thickness in landscape feeding
- Press and scan to cloud servers via the bundled software Button Manager V2
- Earth-friendly LED technology
- Long page scanning up to 6000 mm (236")

### A New Generation of A3 Production Scanner

Avison is pleased to announce its release of the high-volume production scanner with a robust 500-page auto document feeder and a blazing scanning speed of up to 120 pages per minute in Color, Grayscale, and Monochrome. With triple ultrasonic double-feed detection capability, the AD8120UN delivers exceptional feeding reliability to maximize your scanning productivity in a small unit.

### Plastic card or ID card uses the straight paper path

To provide scanner users with the most versatile scanning environments, the user has the choice to utilize a U-Turn or straight paper path. By opening the rear cover, users can use the straight path to transport paper direct to the rear of the unit. To utilize the straight paper path ensures high reliability with plastic card, ID card, thick, long paper, or more fragile documents.

### Dual-lamp Design to Handle Wrinkled Documents

Designed to handle even extreme applications, the AD8120UN scanner is built-in with two long-lasting lamps. These mercury-free lamps give you maximum illumination to help eliminate shadows from wrinkled documents.



### High-Volume Daily Duty Cycle

The scanner can be used to scan up to 60,000 pages per day through the 500-page automatic document feeder. The data indicates that this scanner is designed to scan document in any application requiring frequent document and hard card scanning.

### A Wired Network Scanner

After connecting to the LAN through the ethernet cable, install Avison's Network setup tool - Virtual Scanner Link software to find and connect the scanner on the LAN. Then you can start a scan either from your computer directly on the scanner's button. What is best, the network scanner allows you to switch to other computers in the LAN, users in the LAN can really enjoy the scan and collect the image on their own computers!

### A Large LCD Display

The AD8120UN is easy to use through the clear 1.77" LCD display. By selecting your destination and pressing the "Scan" button, the scan can be done and the scanned image can be sent to your specified destination application such as e-mail, printer, or your favorable image-editing software application. Up to nine frequently used scan settings and destinations can be preset for different scanning needs.



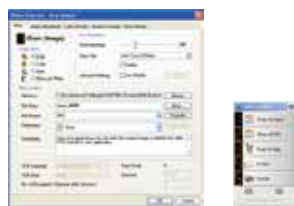
### Powerful Bundled Software Applications

The AD8120UN comes with TWAiN and ISIS drivers, and are bundled with a suite of powerful software applications that include Avison Button Manager, AVScan X, and Nuance PaperPort SE 14.

# AD8120UN Production Scanner

## Avison's Button Manager V2

Completes your scan with a single step



The Button Manager V2 main screen

Button Manager V2 makes it easy for you to scan and send your image to your favorite destinations with a press one button. Now the new version comes with an innovative feature to let you scan and automatically upload the scanned document to popular cloud repositories such as Google Docs, Microsoft SharePoint or FTP. In addition, the iScan feature allows you to insert the scanned image or recognized text after optional OCR (Optical Character Recognition) process to your text editor such as Microsoft Word to get your job done easily and quickly.

## AVScan X

The Intelligent Document Management Tool



The AVScan X main screen

Document Imaging is the very first step of Document Management. However, poor quality images can cause serious problems to later indexing or storing processes. It may increase scanning labor costs and lower the OCR accuracy. AVScan X ensures all documents are checked and polished at the time they are scanned such that the image quality is guaranteed before they are ready to use for other purposes.

AVScan X is an intelligent scanning and electronic filing solution. AVScan X possesses distinct features that convert and index scanned information into electronic documents for easy storage and fast retrieval.

## Nuance PaperPort SE14

- The Professional Choice to Organize and Share Your Documents



The PaperPort SE14 main screen

PaperPort SE 14 is Nuance's most popular scanning and document management solution, carefully designed specifically for home office use. Part traditional file cabinet, part digital-document desktop, PaperPort SE 14 is the fastest and easiest way to scan, share, search, and organize your documents. Additionally, PaperPort SE 14 now delivers anytime-anywhere access to your most important files however it's convenient for you - using a PC, Mac, iPhone, iPad, or Android device.



PAPERPORT SE 14



Avison Button Manager V2

AVScan X



## Avison AD8120UN Product Specifications

Paper Feeding:	ADF 500-page capacity
Scanning Technology:	CIS
Light Source:	LED
Card Thickness:	Up to 1.25 mm (Straight Path)
Long Page Mode:	6000 mm (236 in.)
Document size (ADF):	Min. (Single-pages): 50 x 65 mm ( 2 x 2.5 in. ) Min. (Multi-pages): 50 x 85 mm ( 2 x 3.3 in. ) Max. 308 x 432 mm (A3) (12.15 x 17 in.)
ADF Scanning Speed:	120 PPM/ 240 IPM (color, A4, 200 dpi, Landscape) 120 PPM/ 240 IPM (color, A4, 300 dpi, Landscape)
Paper Thickness:	U-Turn Path: 27~105 g/m <sup>2</sup> (7~28 lb.), 20 g/m <sup>2</sup> (single-page) Straight Path: 27~413 g/m <sup>2</sup> (7~110 lb.), 20 g/m <sup>2</sup> (single-page)
Optical Resolution:	600 dpi
Output Resolution:	75, 100, 150, 200, 300, 400, 600 and 1200 dpi
Output Formats:	B/W, greyscale, 24-bit color
File Formats:	BMP, PNG, GIF, JPEG, PDF, Searchable PDF Multi-Page TIFF, TIFF, RTF, TXT, XPS, DOC, XLS, PPT, DOCX, XLSX, PPTX, HTML.
Bundled Software:	Avison Button Manager V2, Avison AVScan X Nuance PaperPort SE 14
Interface/Drivers:	USB3.2 Gen 1x1/TWAIN, ISIS, RJ-45 Ethernet 10/100/1000 Mb
Power Supply:	Input: AC 100-240V, 2A, 50-60Hz; Output: DC 24V, 6.25A
Power Consumption:	Operation: 92W Sleep: 0.28 W Ready: 17W Off: 0.28W
Environmental Factors:	Operating temperature: 10°C to 35°C (50°F to 95°F) Operating relative humidity: 10% to 85%
Acoustic Noise:	Ready: <25 dB Operating: <55 dB
Dimensions	Max.: 460 x 784 x 362 mm ( 18.1 x 30.8 x 14.2 in.)
(W x D x H):	Min.: 460 x 446 x 362 mm ( 18.1 x 17.5 x 14.2 in.)
Weight:	25 kg ( 55 lb.)
Recommended Daily Scanning Volume:	Up to 60,000 sheets
Multi-feed Detection:	Ultrasonic Sensor

We have endeavored to ensure that the information in this manual is accurate and that Avison is not responsible for printing or typographical errors. The above configuration is for reference only. The actual configuration may vary without notice. Avison Inc. reserves the right to change, without notice, the product design and the product outlook and design and the product outlook and design are subject to change. Avison Inc. owns the intellectual property rights of the product outlook and design and the product outlook and design are trademarks of Avison Inc. All rights reserved. Other company and product names mentioned in this document are trademarks of their respective companies. Wherein the third party product is for reference only and Avison does not warrant these products nor is responsible for the efficiency or use of these products.

## System Requirements

CPU:	Intel Core i3 (2.1GHz) or Higher
Memory:	2GB (32bit Windows) 4GB (64bit Windows)
DVD-ROM:	DVD ROM Drive
USB:	USB3.2 Gen 1x1
Windows Operating System:	Windows XP SP3, Vista, 7, 8.x, 10 (32 & 64 bit)

## Contents:

Scanner
Power Cord
Quick Guide
USB3.2 Gen 1x1 Cable
CD-ROM includes:
-Scanner Driver
(TWAIN/ ISIS/ WIA Driver)
-Avison Manager V2
-Avison AVScan X
-Nuance PaperPort SE 14



**Avison**  
www.avision.com